



4630 BACK SUPPLY 4635 TOP SUPPLY

Floor Mounted, Blowout Type

These Toilet Fixtures are designed for high security areas without an accessible pipe chase. The fixtures are fabricated using heavy gauge type 304 stainless steel, seamlessly welded to form a one piece, vandal resistant unit. Internal piping is stainless steel. Exposed surfaces have a satin finish, except for the integral seat which is polished to a bright mirror finish.

PERFORMANCE

Metcraft bowls and assemblies are designed to withstand 5000 lb. (22kN) loading without permanent deflection and damage. They meet or exceed ASME 112.19.6M for hydraulic performance and ASME 112.19.2M for physical dimensions. The trap will pass a 2 5/8" (67mm) dia. ball. A minimum 1" (25mm) supply providing 25psi (172kPa) flushing pressure is required.

Water Consumption:

With a water saver flush valve - 3.5 gpf (13 liters)

With a low consumption flush valve - 1.6 gpf (6 liters)

INSTALLATION

The fixtures are supplied with two 3/8" (10mm) dia. mounting holes for securing to the waste flange (waste flange provided by other manufacturers). A floor clip with two 1/2" (13mm) bolts is provided to secure unit to the floor. The installer must provide wall openings for piping per rough-in drawings provided by Metcraft. Fixture meets A.D.A. requirements when installed per A.D.A. guidelines.

RECOMMENDED FLUSH VALVES

	SLOAN	ZURN	DELANY
Concealed water saver	952-MBFW	ZH6152-MBFW	1234
Concealed low consumption	952-1.5-MBFW	ZH6152-WS1-MBFW	1234-1.5
Exposed water saver	110	Z6000	439
Exposed low consumption	111	Z6000-1.5	439-1.5

NOTE: Plan for service access to concealed flush valve.

METCRAFT

INDUSTRIES INC.



Unit may be pictured with some optional features.

STANDARD FEATURES

- Floor mounted, wall outlet waste.
- 4630 back supply connection 1 1/2" (38mm) FIPT.
- 4635 top supply connection 1 1/2" (38mm) MIPT.
- Integral elongated seat.
- Self draining flushing rim.
- Blowout flushing action.
- 3" (76mm) OD toilet waste tube with 5 1/2" (140mm) dia. recessed gasket flange. Flange has two 3/8" (10mm) dia. holes on 6" (152mm) centers.
- Fully enclosed trap.

OPTIONS & ACCESSORIES

- A168** Metal template
- HS** Hinged white plastic seat (no cover)
- A720** Wall mounted tissue holder

MODEL 4635 (TOP SUPPLY)

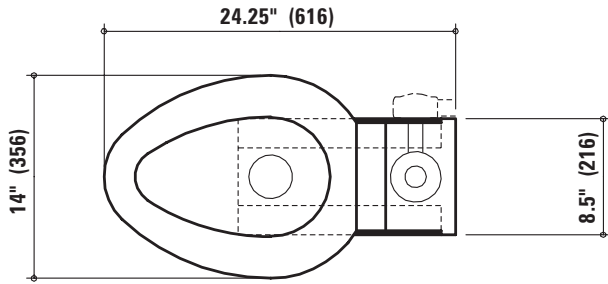
- A615** Flush valve enclosure

MODEL 4630 (BACK SUPPLY)

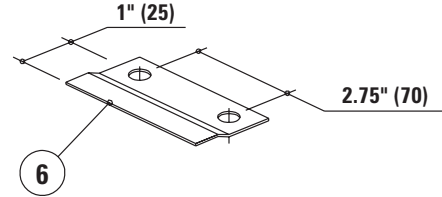
- A611** Flush valve access panel
15" (381mm) x 19" (483mm)



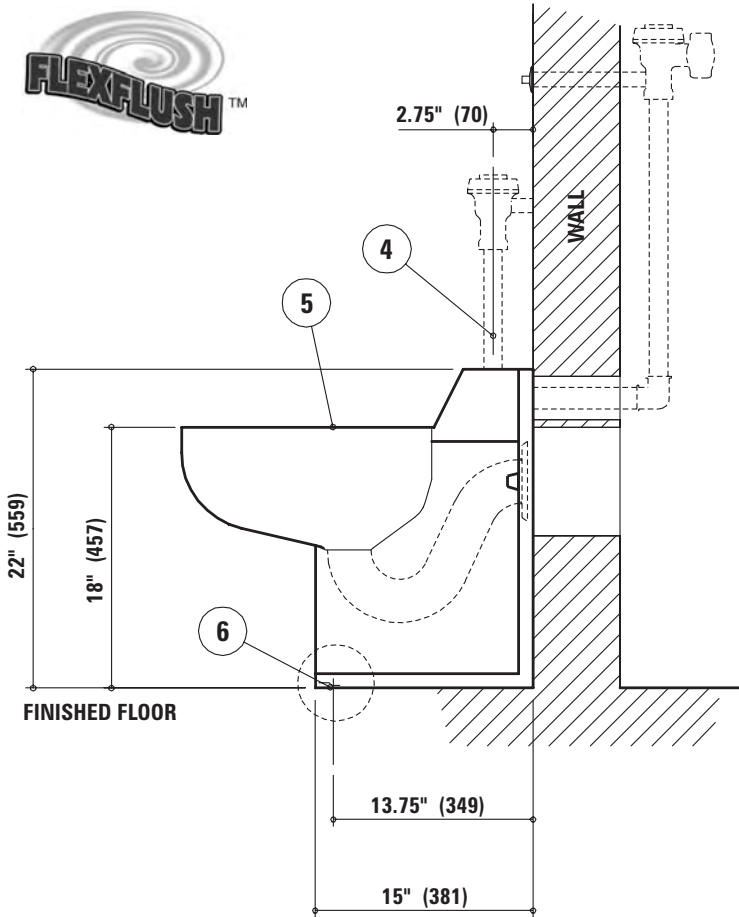
FIXTURE PLAN VIEW



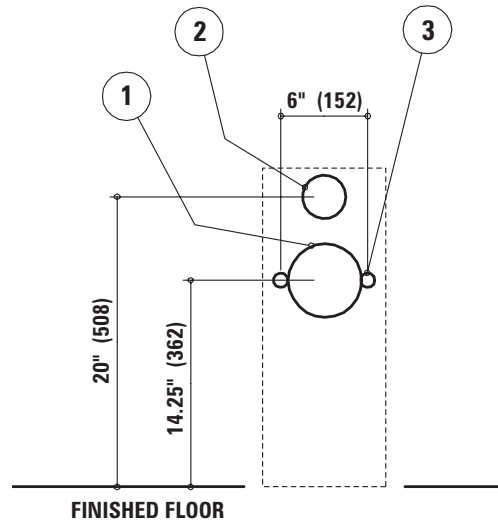
Z-CLIP ANCHOR DETAIL



FIXTURE SIDE VIEW



WALL ELEVATION VIEW (fixture side)



ROUGH-IN INFORMATION

- ① Flange locations
- ② 3" (76mm) wall opening for 1 1/2" (38mm) FIPT flush supply inlet (model #4630)
- ③ Flange bolt locations
- ④ 1 1/2" (38mm) MIPT top supply inlet (model #4635)
- ⑤ Mirror finish seat
- ⑥ Floor mounted Z-clip

Due to continuous product improvement Metcraft reserves the right to make changes in design and specifications without prior notice. All dimensions should be verified with the factory for current information.

2007

