

5690

**Front Mounted Security Drinking Fountain**

This Drinking Fountain is designed for installation in areas without an accessible pipe chase. The fixture is fabricated using heavy gauge type 304 stainless steel seamlessly welded to form a one piece, vandal resistant unit. The fixture is furnished with a 4" (102mm) high back splash. The bottom enclosure plate is removable and secured with stainless steel tamper resistant screws. Exposed surfaces have a satin finish. Fixture is furnished with a security type chrome plated brass bubbler head, a pneumatic pushbutton control valve with .5 GPM flow control and a slip joint P-trap. Valve and P-trap are installed inside fixture.

**INSTALLATION**

Supply and waste piping are roughed in at wall locations shown on drawings provided by Metcraft. Wall anchors (not furnished) must be embedded in the wall at mounting locations shown on drawings. The fixture is mounted to the wall using a hanger bracket and bolts furnished with the fixture. Piping connections are made through the removable bottom access plate which is secured in place with the vandal resistant fasteners provided.



Unit may be pictured with some optional features.

**STANDARD FEATURES**

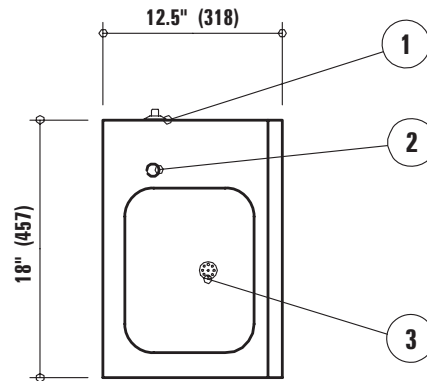
- Deep rectangular splash basin with multi-hole integral drain.
- Heavy duty chrome plated vandal resistant bubbler head.
- Security type pushbutton pneumatic control valve with .5 GPM flow restrictor.
- 1 1/2" (38mm) OD slip joint P-trap.
- 4" (102mm) high back splash.
- Removable bottom enclosure with stainless steel vandal resistant screws.

**OPTIONS**

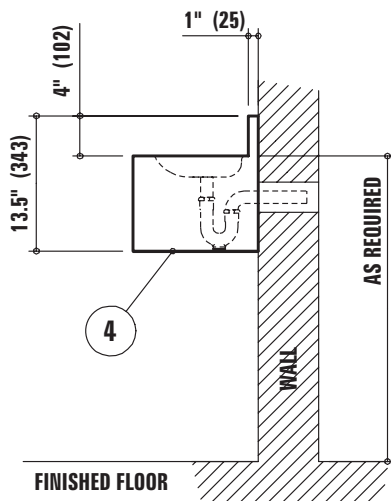
**A168** Metal template

**METCRAFT**  
INDUSTRIES INC.

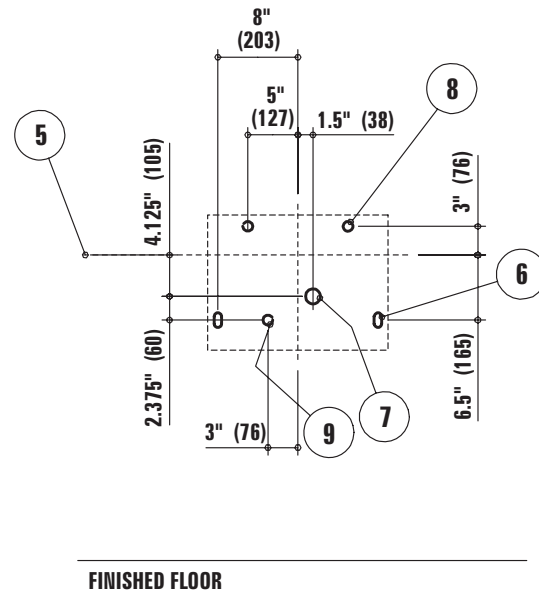
FIXTURE PLAN VIEW



FIXTURE SIDE VIEW



WALL ELEVATION VIEW (fixture side)



**ROUGH-IN INFORMATION**

- |                              |  |   |
|------------------------------|--|---|
| ① Valve pushbutton           | ④ Tamper resistant removable bottom                    | ⑦ Waste outlet  |
| ② Security type bubbler head | ⑤ Drinking fountain rim location                       | ⑧ Anchor locations with 1/2" (13mm) wall fasteners for wall bracket (2) |
| ③ Fast drain                 | ⑥ Anchor locations with 1/2" (13mm) wall fasteners (2) | ⑨ Valve water supply connection   |

Due to continuous product improvement Metcraft reserves the right to make changes in design and specifications without prior notice. All dimensions should be verified with the factory for current information.

2007

